

CONTENTS

The features marked with a star (*) are based entirely on material taken straight from standard research (and other Official and Therefore Always Correct) literature. Many of the other articles are genuine, too, but we don't know which ones.

ANNALS OF

IMPROBABLE RESEARCH



Special Section: Ice Cream

- 4 Ice Cream Research*
- 5 Ice Cream Headaches*
- 7 Ice Cream Impacts*
- 9 Ice Cream Stick Research*
- 11 Medical Instances of Ice Cream*
- 15 Ice Cream Multiplicity and Frequency*
- 16 Ice Cream and Happiness*

Improbable Research Reviews*

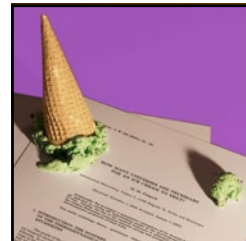
- 2 May We Recommend: Unidirectional Friendship*
- 12 Medical: Drinking Grandma, Snoring, Meditation*
- 17 Improbable Research: Distance, High Heels, Blinking*
- 19 Icky Cutesy Research: Lettuce, Lego, Dog*
- 20 Ig® and Beyond: Earwigs, Dog Food, and Ice Cream*

News & Notes

- 3 AIR Vents: Turkey and Metal Bands Confusion
- 14 Teachers' Guide
- 14 AIR Books
- 23 A Hitchhiker's Guide to Brain Science on Planet Earth
- 29 Ig Nobel Limericks: Reattachment and Dizziness*
- 30 Back Issues
- IBC Unclassified Ads

On the Front Cover

Ice cream melting on a paper about melting ice cream. See page 4.



On the Back Cover

A 1914 photo of Dr. Charles Campbell and a "municipal bat-roost", a structure in San Antonio, Texas — designed to help eradicate mosquitoes, as well as bolster the bats.



Some Coming Events

The Covid-19 pandemic has introduced excitingly boundless uncertainty as to whether, when, and where public activities will happen in the near future. In 2022 some will happen teledistantly.

See **IMPROBABLE.COM** for details of these and other events:

January 14, 2022—

Arisia, Boston, USA

January 20, 2022—

Improbable Conversation (premiere of a new series, online)

February, 2022—

AAAS Annual Meeting, Philadelphia, USA

March/April 2022

Ig Nobel Euro (and Britannia) Tour (if the pandemic allows)

September, 2022—

The 32nd First Annual Ig Nobel Prize Ceremony



Where There's More

There's always new improbable — it's not what you expect! — stuff on the **Improbable Research blog** at [IMPROBABLE.COM](https://www.improbable.com)

Listen to the Improbable Research podcast!

[https://www.improbable.com/
category/the-weekly-improbable-research-podcast/](https://www.improbable.com/category/the-weekly-improbable-research-podcast/)

ICKY CUTESY RESEARCH: LETTUCE, LEGO, DOG

Research that may be icky or cutesy

compiled by Bulan Septriasa, Improbable Research staff

Cutesy: Lettuce Be Happy

"Lettuce Be Happy: A Longitudinal UK study on the Relationship Between Fruit and Vegetable Consumption and Well-Being," Neel Ocean, Peter Howley, and Jonathan Ensor, *Social Science and Medicine*, vol. 222, 2019, pp. 335-345. The authors are at the University of Leeds and the University of York, UK.



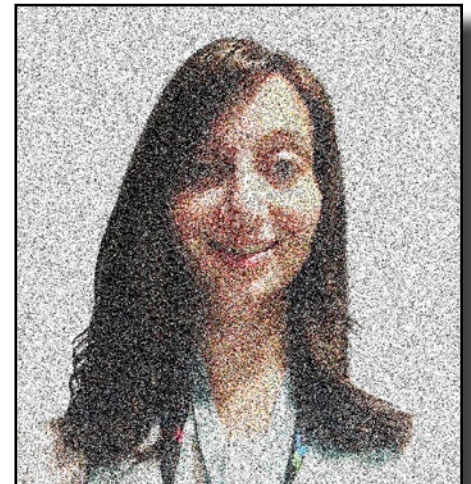
Cutesy: Don't Forget the Lego

"Everything is Awesome: Don't Forget the Lego," Andrew Tagg, Damian Roland, Grace S.Y. Leo, Katie Knight, Henry Goldstein, and Tessa Davis, *Journal of Paediatrics and Child Health*, vol. 55, no. 8, August 2019, pp. 921-923. The authors, at the University of Melbourne, the University of New South Wales, the University of Queensland, Australia, and Leicester University, UK, report:

Children frequently ingest coins... In this study, we aimed to determine typical transit times for another commonly swallowed object: a Lego figurine head.....

Six paediatric health-care professionals were recruited to swallow a Lego head.....

Conclusions—A toy object quickly passes through adult subjects with no complications. This will reassure parents, and the authors advocate that no parent should be expected to search through their child's faeces to prove object retrieval.



Tessa Davis, co-author of the study "Everything is Awesome: Don't Forget the Lego." Drawing by Nan Swift

Icky: A Dog Who Loved His Dead Owner

"On the Temporal Onset of Postmortem Animal Scavenging, 'Motivation' of the Animal," Markus A. Rothschild and Volkmar Schneider, *Forensic Science International*, vol. 89, 1997, pp. 57-64. The authors, at Freie Universität Berlin, Germany, report:

In this paper we deal with the case of a 31-year-old man, who committed suicide by shooting himself in the mouth and whose face exhibited extensive postmortem animal bite marks caused by the victim's Alsatian, which must have occurred during the 45 minute period between the fatal shot and the discovery of the body.... In the room where the victim was found, there was also a bowl with sufficient dog food and while being transported to an animal sanctuary in a police van the dog vomited about 400 g of dog food as well as human tissue.

